



Image #1

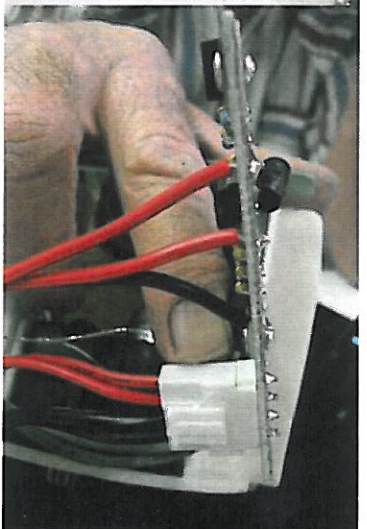


Image #2

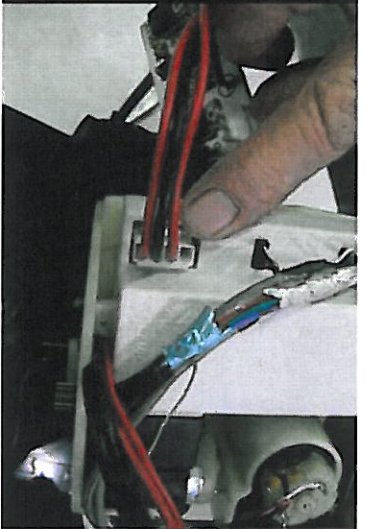


Image #3



Image #4

Converting 24 Volt to 12 Volt RadioRay

Step #1 - Pull the receiver unit from the light (as seen in image #1)

Step #2 - Unplug the receiver plug from the 24 volt board (as seen in image #2)

Step #3 - Unplug the 24 volt board from the receiver (as seen in image #3)

Step #4 - Plug the receiver plug (taken from the 24 volt board in step #2) into the receiver (as seen in Image #4)