

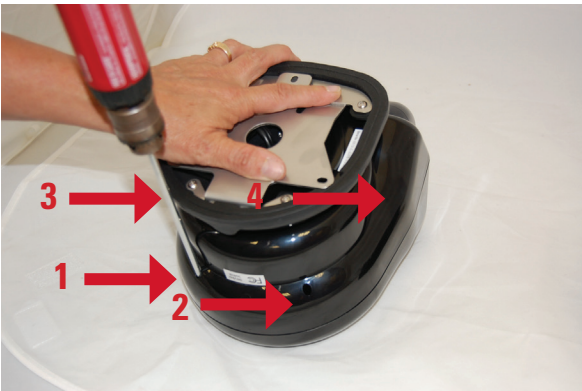


Stryker Disassembly

STEP #1 - Tilt the lamp straight up. If there are two screws attached to the top housing, remove the screws with a Phillips head screwdriver. If there are not two screws, continue to the next step.



STEP #2 - Place the Stryker in an inverted position on a scratch free surface. Using a Phillips screwdriver, remove all the screws that attach the top and bottom housing. (Depending on the age of your light, there will be 2 or 4 screws to remove.)



STEP #3 - Grasp back side of top housing and pull up to remove.

