

# Golight® Stryker® ST Series Hardwired Remote

**MODELS-** HALOGEN 3020ST, 3021ST, 3026ST LED SPOT 30204ST, 30214ST, 30264ST  
LED HYBRID 30208ST, 30218ST

## Congratulations

You are now the owner of one of the finest remote control searchlights available today. Thank you for letting Golight® assist you in your lighting application needs. We're proud of our products and the technology that we've developed to ensure our customers the most durable, versatile and powerful searchlights in the lighting industry.

Please read these instructions before using your new Golight® Stryker® ST.



**GOLIGHT INC**  
**[www.golight.com](http://www.golight.com)**

## Instruction Guide

## **STRYKER ST HARDWIRED** //////////////////////////////////////

The Golight® Stryker® ST hardwired remote spotlights are designed to be attached to a vehicle using a permanent mount and operated by a hardwired remote control. Each spotlight has 370° horizontal rotation and 135° vertical tilt.

### **The Stryker® ST Includes:**

- Stryker® ST Spotlight
- Hardwired Dash Remote with two built-in studs and wing nuts
- Wiring Harness – 20 foot (6 meter) long
- Rockguard (halogen units only)
- Mounting Plate
- Three #8-16 x 3/4 inch panhead stainless steel self-tapping screws

### **Tools Required:**

- Drill
- Drill bits as needed
- Screwdriver - #1 Phillips
- Silicone sealant
- General electrical installation tools as needed

## **MOUNTING** //////////////////////////////////////

### **DASH REMOTE**

1. Determine a location for the dash remote. Drill two holes 4.5 mm or 3/16 inch diameter for the mounting screws and one hole 24 mm or 15/16 inch diameter for the electrical connector to pass through. A template is attached to end of this brochure to facilitate hole drilling- See Figure 1.
2. Route the connector on the remote through the hole in the dash and connect to mate on the wiring harness.

### **OPTIONAL POSSIBILITIES**

- One ST hardwired remote controlling two ST Spotlights using the ST-3020-Y splitter
- Two ST hardwired remotes controlling one ST spotlight using the ST-3020-X splitter

When using one remote to control two spotlights, the spotlight selector function allow the user to control the spotlights independently or in tandem. For more directions on the possibilities please see [golight.com/ST](http://golight.com/ST)

### **MOUNTING INSTRUCTIONS - SPOTLIGHT**

1. Determine the location for the light on your vehicle. This should be a flat surface. The small arrow on the base indicates the normal forward direction of the light. The light will rotate to the left of this arrow 185 degrees and to the right 185 degrees. The lamp will tilt down 45 degrees and tilt up 90 degrees. The location should take into consideration this range of motion to maximize usability. Keep in mind the swing diameter is 286 mm (11.3 inches) from the center of the mounting plate – see Figure 2. This allows for clearance as the light is rotating.

2. Remove the dog point screw from the mounting plate. Refer to Figure 3. Save this screw for reinstallation. Remove mounting plate from base.
3. The mounting plate is designed to be utilized with either the supplied sheet metal screws or a combination of cap screws, nuts and washers. You should choose hardware appropriate to the surface to which you intend to attach the light. Drill holes in mounting surface for either type of hardware depending upon your preference. Refer to Figure 4 for hole pattern dimensions or use the mounting plate as a template. Drill holes and secure mounting plate with fasteners.
4. Drill a center hole in mounting surface for passage of wiring harness. Minimum suggested diameter is 27 mm (1 1/16 inch).
5. The red and black wire leads on the spotlight need to be connected to a fused 12V DC power source on the vehicle. It is critical that polarity be observed. See amp draw and recommended fuse size chart below. Connect vehicle positive (+) to spotlight positive (red) wire. Connect vehicle chassis ground (-) to spotlight ground (black) wire. Use appropriate wire gauge and fuse for your light and appropriate automotive wiring connectors.

### **Electrical requirements are as follows:**

Halogen Models – 3020ST, 3021ST, 3026ST

Max Current Draw: 5.5A @ 13.8V

Recommended Fuse: 7.5A to 10A

LED Models – 30204ST, 30214ST, 30264ST, 30208ST, 30218ST

Max Current Draw: 3.5A @ 13.8V

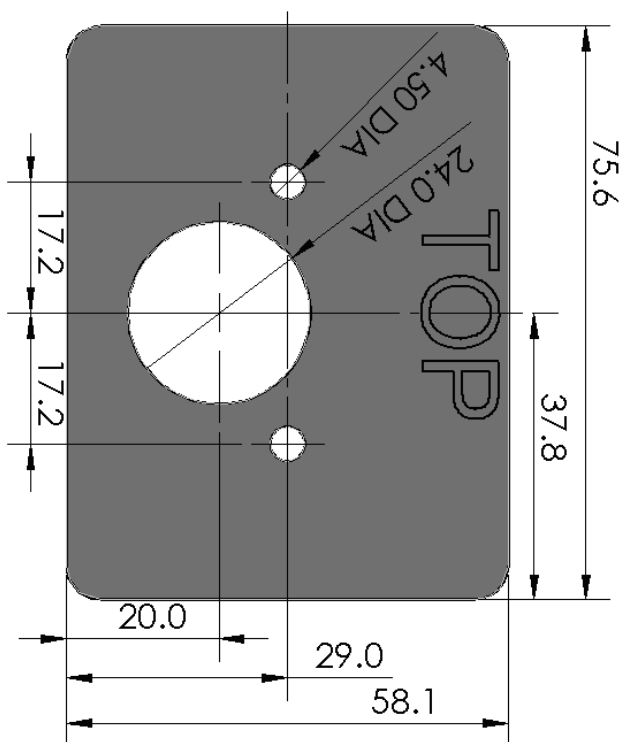
Recommended Fuse: 5A

# MOUNTING CONT. //////////////////////////////////////

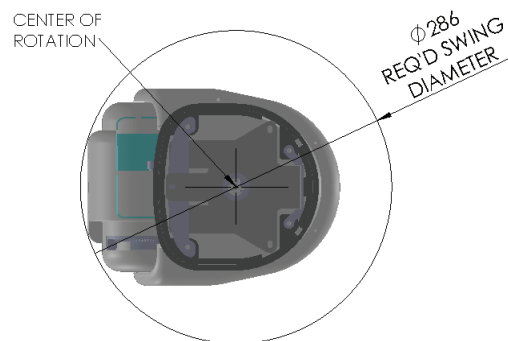
- Route the wiring harness from the remote through the vehicle to the mounting bracket.
- Connect electrical connector on spotlight to mating connector on wiring harness.
- Use silicone sealant to fill center hole around wiring harness. **IMPORTANT:** Allow 75 mm (3 inches) of cord to remain under light to ensure full 370 degrees rotation.
- Ensure gasket is properly placed on perimeter of the base. Silicone or other like sealants should not be used around the gasket as it will limit the ability to drain water properly.
- Wet the mounting surface with a small amount of water to ease installation.
- Tipping the front of the light down, first push it forward and then pull backward causing the front bracket to hook into the mounting plate. Refer to Figure 3.
- Seat the rear bracket and base onto the mounting plate. Peel back the tab at the rear of the mounting gasket to gain access to the screw hole. Install dog point screw through base and rear bracket and tighten into mounting plate.
- Mechanical installation is now complete.

**Figure 1- Wired Dash Remote Template**

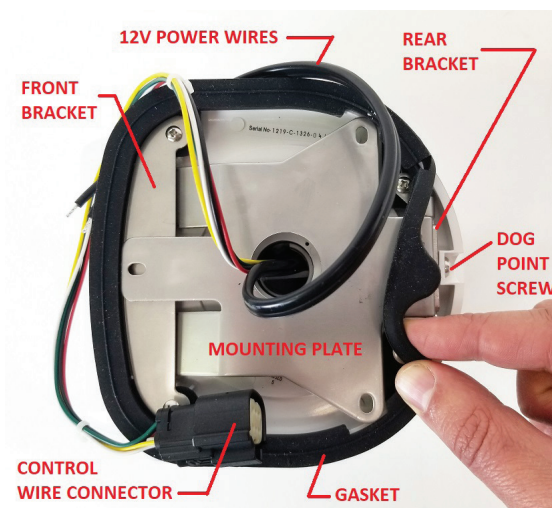
- 1 Large hole - 24 mm or 15/16 inch
- 2 Small holes - 4.5 mm or 3/16 inch



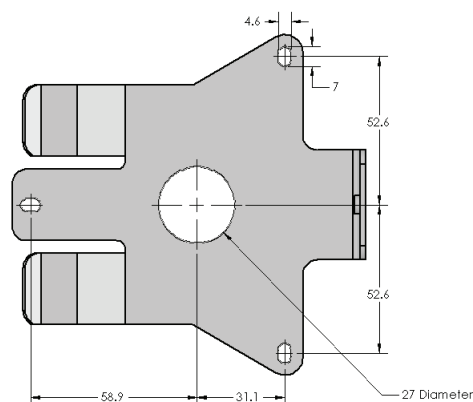
**Figure 2 – Permanent Mount Stryker® ST Spotlight – Bottom View Looking Up -Dimension in mm**



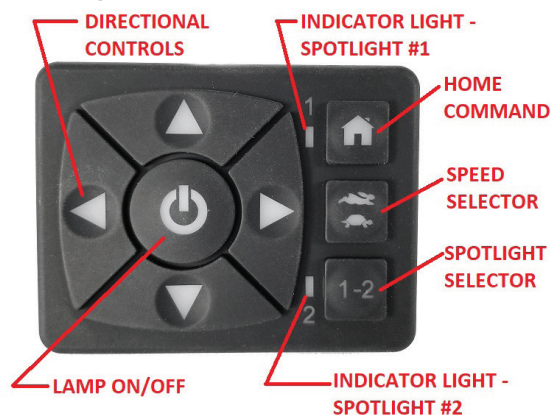
**Figure 3 – Stryker® ST viewed from bottom**



**Figure 4 – Mounting Plate Hole Dimensions (mm)**



**Figure 5 – ST Hardwired Remote**



## **OPERATION & PROPER USE** //////////////////////////////////////

1. Connect the power wires as detailed under the Mounting Instructions.
  2. Using the remote, turn on the light by depressing the on/off key. See Figure 5. The dash remote keys will be backlit when the light is on.
  3. With the 4-Way arrows on the remote, rotate or tilt your spotlight to the desired position. The spotlight can be rotated and tilted simultaneously.
  4. The speed of the spotlight rotation or tilt can be controlled by depressing the speed selection key one time and by depressing it again to restore the original speed.
  5. If more than one spotlight is connected to the remote, depressing the spotlight selector key will toggle to control operating either of the two lights individually or both lights simultaneously. Note that the indicator LEDs on the remote will show which spotlight is activated.
  6. Depressing the home key will rotate the spotlight to 0° (forward) horizontal position. The vertical position is not adjusted with the "home" command.
- This light is intended for off-road and utility use only
  - This light is intended to be mounted outside the vehicle while in use
  - This light may only be disassembled and repaired by an authorized representative

## **WARRANTY, PARTS, END OF LIFE** //////////////////////////////////////

### **FIVE YEAR LIMITED WARRANTY**

Golight, Inc. warrants the Stryker® ST against any deemed defects that are due to workmanship for parts or faulty materials, except halogen lamps, for five years from the date of the original purchase. This warranty does not cover damages resulting from unreasonable use or misuse, unreasonable maintenance or loss, or labor costs.

Warranty information must be filled out within 30 days of purchase at:  
<https://golight.com/registration/>, for warranty protection.

If the Stryker® ST does fail to operate under warranted specifications, please call 1-800-557-0098 for a Return Goods Authorization number. After receiving an RGA#, send the light and remote controls postage paid to:

Golight, Inc., Attn: RGA# \_\_\_\_\_  
37146 Old Hwy 17, Culbertson, NE 69024-8226.

No C.O.D.'s accepted. Only the above manufacturer is authorized to perform warranty repair or replace product.

Any consequential damages to person or property are excluded from this warranty. Some states do not allow the exclusion and limitation of incidental or consequential damages, therefore the above limitations or exclusions may not apply to you. This warranty gives you specific legal rights and you may also have other rights.

### **PARTS / ACCESSORIES**

Stryker® ST parts and accessories may be purchased through Golight, Inc. Visit our web store at:  
<https://golight.com/accessories-and-parts/> or contact us at 308.278.3131 or 800.557.0098.

### **END OF USEFUL LIFE**

For information regarding the proper disposal/recycling of the spotlight contact Golight at 800.557.0098

**SAFETY & WARNINGS** //////////////////////////////////////

- ⚠ **WARNING:** You risk death or serious injury to yourself and others if you do not follow the instructions highlighted by the warning symbol. Failure to follow the specific warnings and instructions could result in personal injury, fire or electrical shock.
- ⚠ **WARNING:** This light is for off-road and utility use only. It is not designed or approved for road use as a driving light.
- ⚠ **WARNING:** The portable mount Stryker® ST spotlight must be removed from the vehicle’s exterior while traveling at excessive speeds and in strong wind conditions.
- ⚠ **WARNING:** Changes or modifications made by the user not expressly approved by Golight, Inc. for compliance could void the user’s authority to operate the equipment.
- ⚠ **WARNING:** This spotlight is not approved for use inside a vehicle or enclosure and power should be disconnected prior to placing the light in such circumstance.
- ⚠ **WARNING:** This spotlight is not approved for underwater use.
- ⚠ **WARNING:** This spotlight is not approved for inverted mounting.
- ⚠ **WARNING:** This spotlight should not be turned on when snap on lens cover (rockguard) is attached.
- ⚠ **WARNING:** This spotlight may be damaged if operated in icing conditions.

**PRODUCT MISUSE**

- This spotlight is not approved for inverted mounting
- This spotlight may be damaged if operated in icing conditions
- This spotlight may only be disassembled and repaired by an authorized Golight® representative
- This spotlight should not be turned on when snap on lens cover (rockguard) is attached.
- Any violation of the above referenced misuses or warnings will be considered grounds for warranty refusal